

Module 12 – LO1

Spinal Cord

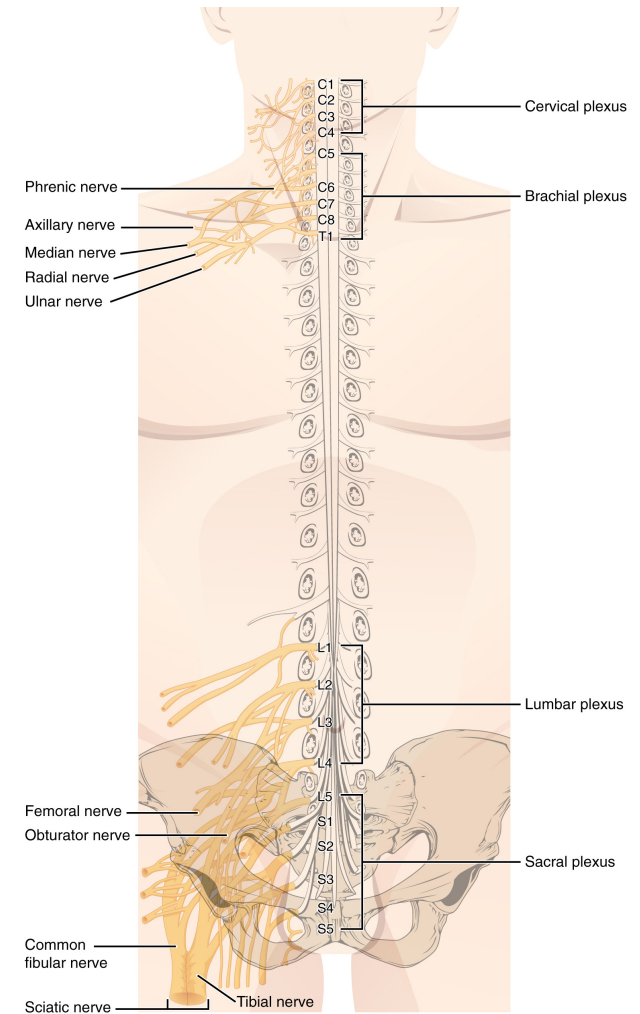
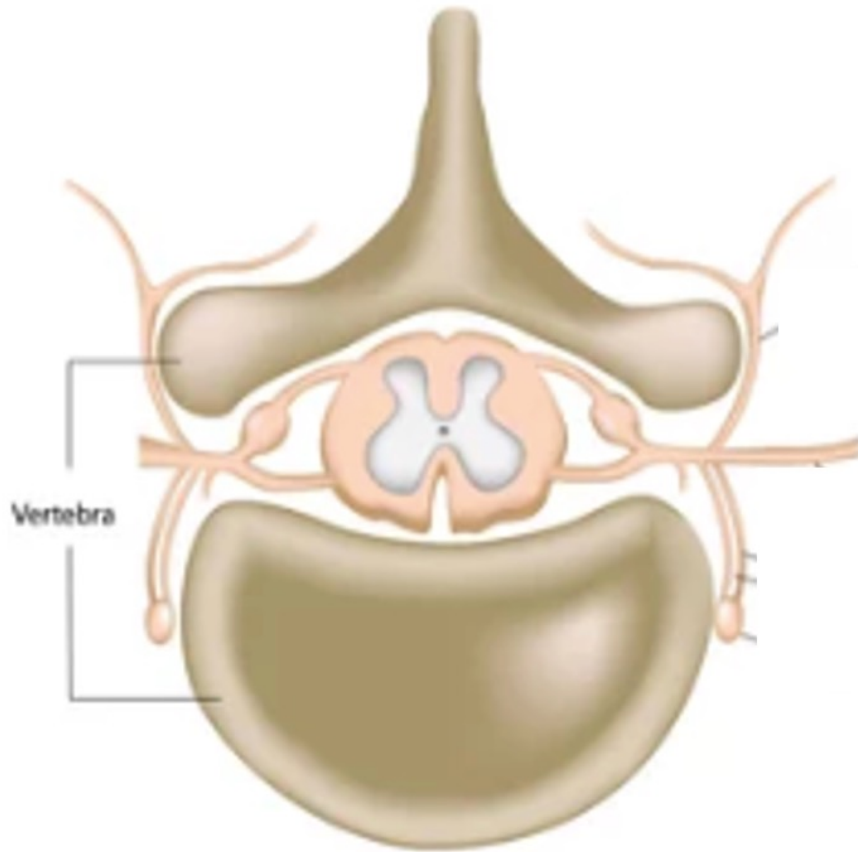
Dr. Lisa Brinn

lbrinn@fiu.edu

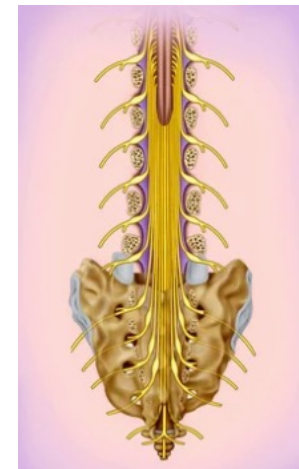
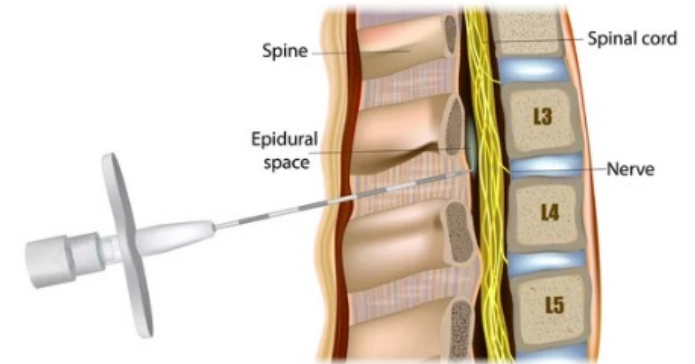
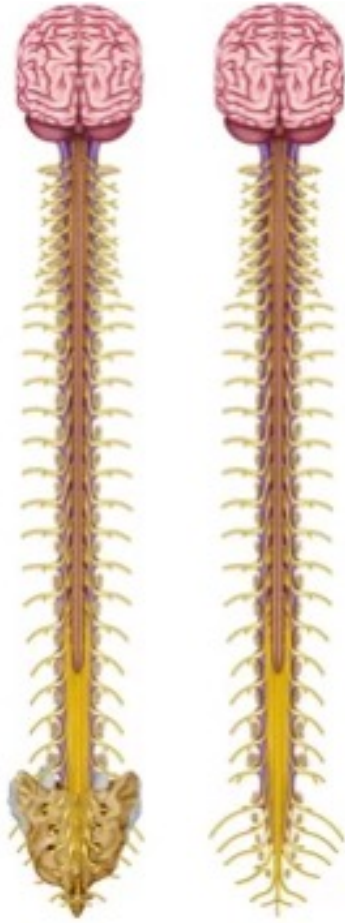
1. Spinal Cord

- The central nervous system (CNS) consists of the *spinal cord* and the *brain*.
 - **The spinal cord and the brain:**
 - Have functional independence.
 - **The spinal cord:**
 - Is more than just a highway for information.
 - Integrates and processes information.

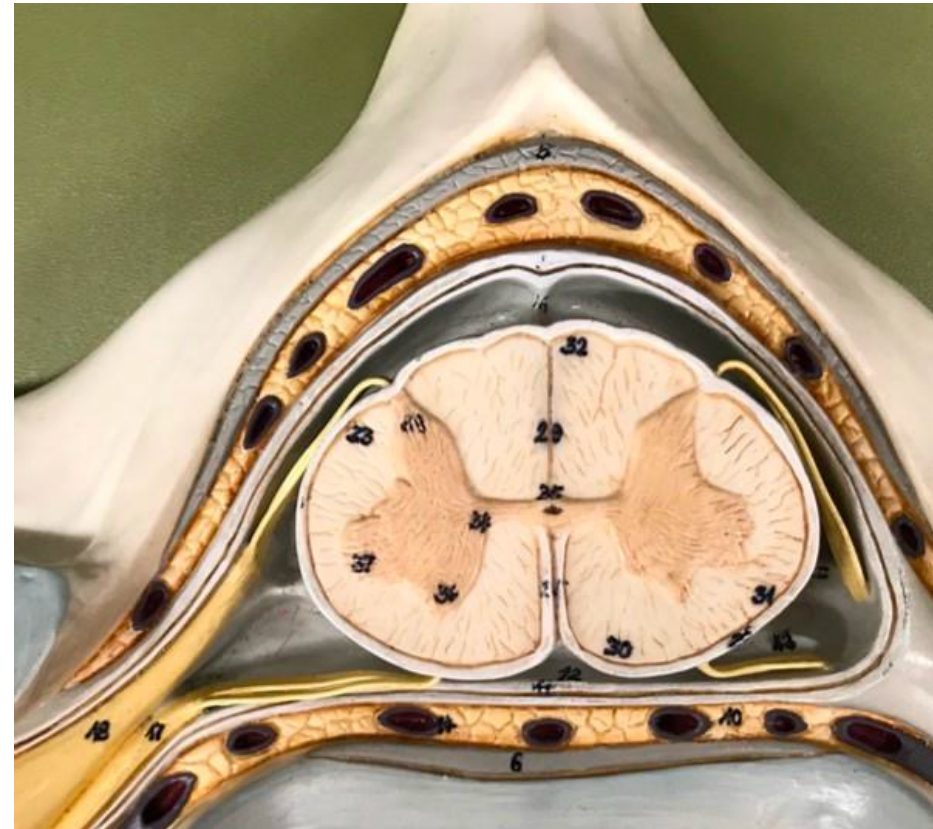
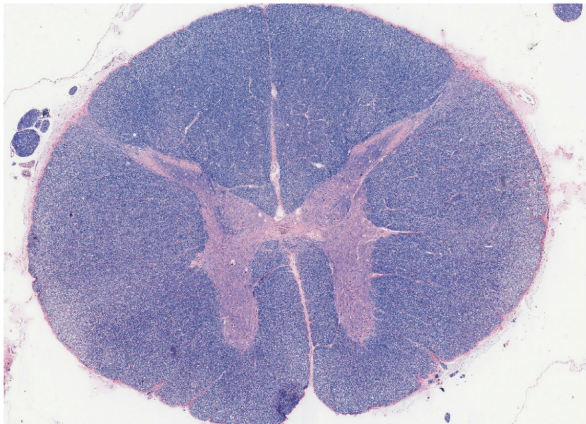
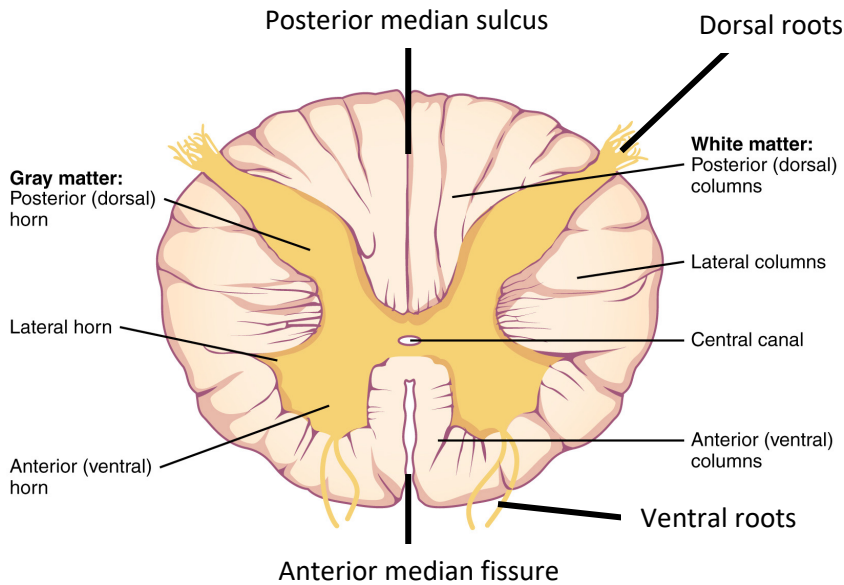
Spinal Cord Gross Anatomy



Spinal Cord and Spinal Nerves



Spinal Cord Sectional Anatomy



Spinal Meninges

